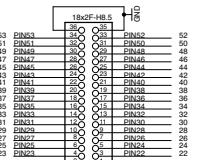
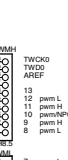
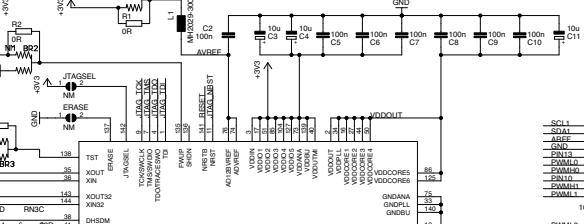
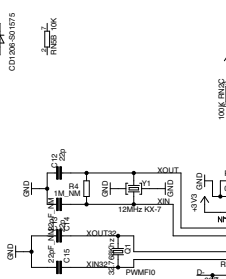
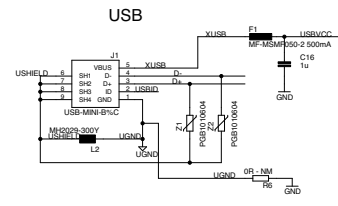
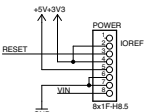
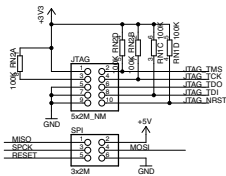
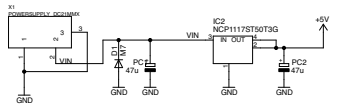


adattatore bidirezionale di livello su IC2



PC11	72	AD2	AD7	AD0
PC10	71	AD1	AD6	AD1
PC9	70	AD0	AD5	AD2
PC8	69	AD4	AD4	AD3
PC7	68	AD3	AD3	AD4
PC6	67	AD2	AD2	AD5
PC5	66	AD1	AD1	AD6
PC4	65	AD0	AD0	AD7
PC3	64	AD7	AD7	AD0
PC2	63	AD6	AD6	AD1
PC1	62	AD5	AD5	AD2
PC0	61	AD4	AD4	AD3
PC11	60	AD3	AD3	AD4
PC10	59	AD2	AD2	AD5
PC9	58	AD1	AD1	AD6
PC8	57	AD0	AD0	AD7
PC7	56	AD7	AD7	AD0
PC6	55	AD6	AD6	AD1
PC5	54	AD5	AD5	AD2
PC4	53	AD4	AD4	AD3
PC3	52	AD3	AD3	AD4
PC2	51	AD2	AD2	AD5
PC1	50	AD1	AD1	AD6
PC0	49	AD0	AD0	AD7

